

# **Outcomes Functionality in CATT**

## **System Documentation**

**Written By**

**Steve Duff  
Centerpoint Health  
September 30, 2005**

**Revised By**

**Steve Duff  
Centerpoint Health  
May 31, 2007  
May 8, 2008**

# Table of Contents

---

<b>Chapter 1 – Outcomes</b> .....	<b>1</b>
Overview.....	1
<b>Chapter 2 – Survey Prediction</b> .....	<b>2</b>
Overview.....	2
Outcomes Configuration.....	3
Creation of Ghost Records.....	5
Adding a New Case.....	5
Using Archive Lookup.....	6
Opening a Program.....	7
Closing a Program.....	8
Transferring from One Program to Another.....	9
Changing an Order on the Order Screen.....	10
Deleting an Order on the Order Screen.....	12
Changing an Order on the Order Edit Screen.....	13
Deleting an Order on the Order Edit Screen.....	15
Outcomes List.....	16
<b>Chapter 3 – Data Entry</b> .....	<b>18</b>
Overview.....	18
Paper Surveys.....	21
Consumer A.....	21
Provider A.....	28
Consumer B.....	32
Youth.....	37
Parent.....	40
Worker.....	43
Data Entry Screens.....	46
Consumer A.....	46
Provider A.....	49
Consumer B.....	51
Youth.....	54
Parent.....	57
Worker.....	60
<b>Chapter 4 – Reports</b> .....	<b>63</b>
Overview.....	63
Report Configuration.....	64
Printed Surveys with Subscales.....	67
Consumer A.....	67
Provider A.....	70
Consumer B.....	72
Youth.....	74
Parent.....	77
Worker.....	80
Needs and Strengths.....	84
Consumer A.....	84
Provider A.....	86
Consumer B.....	88
Youth.....	90
Parent.....	93
Worker.....	96
Individual Staff Compliance.....	98
Outcomes Compliance.....	100
Raw Table Excel Exports.....	104

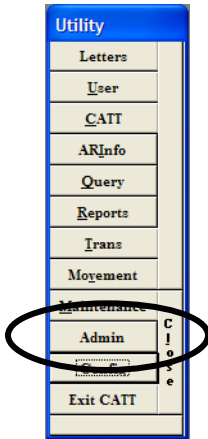
## Table of Contents

---

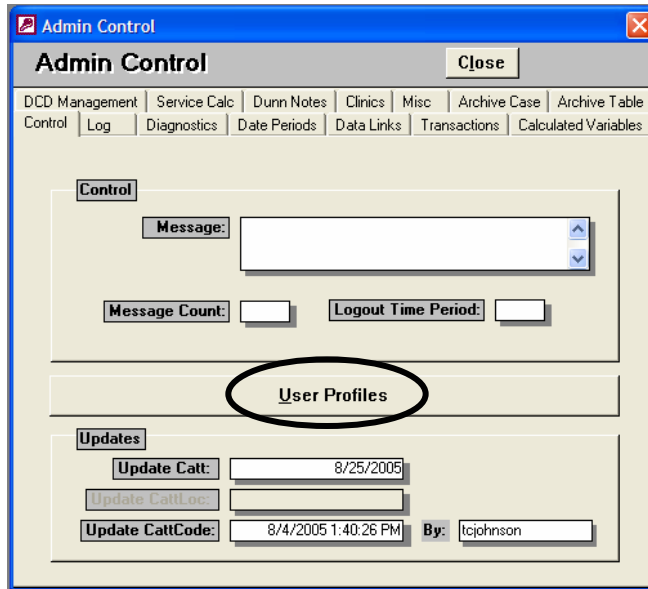
<b>Chapter 5 – Sending Surveys to the Board.....</b>	<b>105</b>
Overview.....	105
Outcomes Administrator Menu.....	106
Managing UCIs.....	107
Creating Export Files.....	110
Sending Files to the Board.....	111
Using FTP to Send Files to the Board.....	111
Notifying the Board When Files Are Sent.....	120
Using FTP to Receive Error Reports from the Board.....	121
Managing Submissions.....	122
Outcomes Compliance.....	123
<b>Chapter 6 – For The CATT Administrator.....</b>	<b>126</b>
Overview.....	126
Setting Up User Access.....	127
How to Give a User Access to the Outcomes Configuration Screen.....	127
How to Give a User Access to the Outcomes Config Survey Code Table.....	128
How to Give a User Access to the Program / Staff Compliance Report (Reports Notebook).....	129
How to Give a User Access to the Raw Table Excel Exports.....	130
How to Give a User Access to the Outcomes Administrator Menu.....	131
Deleting a Case.....	132
Merging Duplicate Cases.....	133
<b>Chapter 7 – For The CATT Programmer.....</b>	<b>134</b>
Overview.....	134
All Components Involved With Outcomes.....	135
Tables.....	135
Queries.....	137
Forms.....	142
Reports.....	144
Macros.....	144
Modules.....	145
Tool Bars.....	145
Export Specs.....	145
Stylistic Notes on Visual Basic Code.....	146
Global Variables.....	146
Local Variables.....	147
Comments in Code.....	148
<b>Chapter 8 – Contact Information.....</b>	<b>149</b>

HOW TO GIVE A USER ACCESS TO THE OUTCOMES CONFIGURATION SCREEN

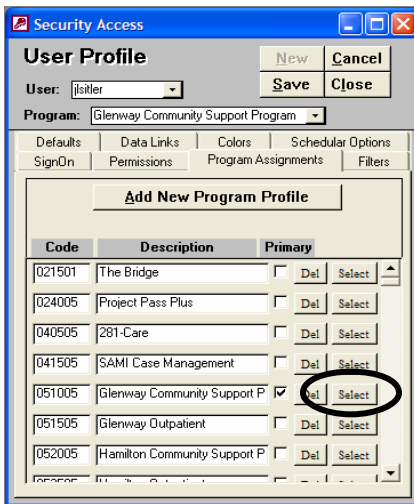
1



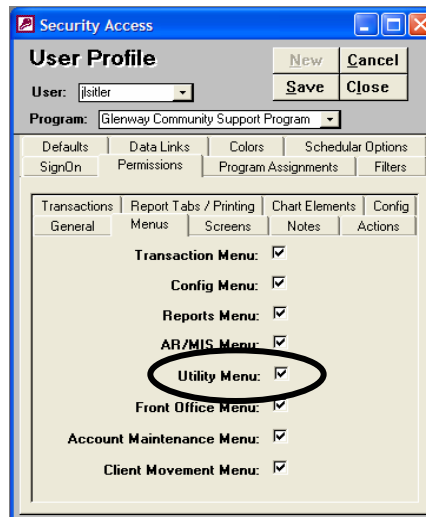
2



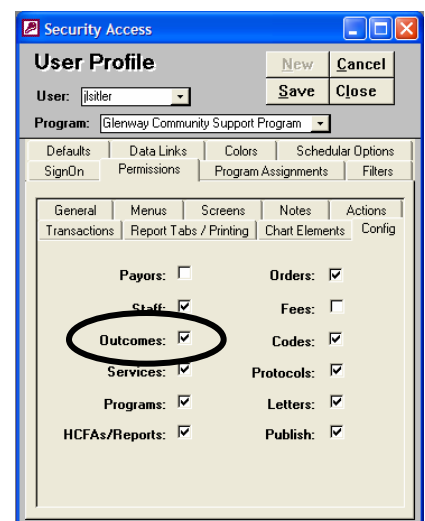
3



4



5



How to give a user access to the Outcomes Configuration Screen:

1. Click the Admin button on the Utility menu.
2. Click the User Profiles button on the Admin Control screen.
3. Select the user from the User picklist. Click on the Program Assignments tab. Click the Select button next to the program login you want to set up to have access to the Outcomes Configuration Screen.
4. Click on the Permissions tab. Click on the Menus tab. Check the Utility Menu checkbox.
5. Inside the Permissions tab. Click on the Config tab. Check the Outcomes checkbox.

Note: This setting is specific to each program login. If a user has multiple program logins, you may want to repeat this procedure for each program in the user's profile.

## MODULES

Module Name	Involvement With Outcomes
AModule	This module contains a lot of code used by CATT. The only procedure involved with Outcomes is the SaveCatt routine. When a user adds a new case using the save button on the Referral screen, the SaveCatt routine is called to add the new client to the CATT table and create the new order. A little bit of code was added to SaveCatt to create survey requirements based on information on the Referral screen. The new block of code is commented at the start and end of the code to make it stand out visually. See page 5.
OutcomesCode	This module contains all of the global code and variables used by CATT to implement the outcomes functionality.

## TOOLBARS

Toolbar Name	Involvement With Outcomes
Tool/Menu Bars / Outcomes Administrator Menu	Used to open the Outcomes Administrator Menu when the user chooses "Outcomes Administrator Menu" from the "Tool/Menu Bars" menu. See page 106.

## EXPORT SPECS

Export Spec Name	Involvement With Outcomes
OutcomesExportSpecConsA OutcomesExportSpecConsB OutcomesExportSpecParent OutcomesExportSpecProva OutcomesExportSpecWorker OutcomesExportSpecYouth	Used by the export file routines to reformat survey data to match exactly the EDI format specified by the Ohio Department of Mental Health. To see where these export specs are used, look at the code behind the "Create Export Files" button on the form OutcomesCreateExportFiles, particularly the DoCmd.TransferText lines near the end of the subroutine.

## GLOBAL VARIABLES

```

Option Compare Database

'The following global variables are used in queries, forms, and code for the Outcomes routines.
'The ReturnsOutcomes...() functions are used to reference the global variables in queries.
Global gblOutcomesCaseNumber As Variant
Global gblOutcomesDOB As Variant
Global gblOutcomesProgramCode As Variant
Global gblOutcomesFromProgramCode As Variant
Global gblOutcomesToProgramCode As Variant
Global gblOutcomesClinicID As Variant
Global gblOutcomesClinicUPID As Variant
Global gblOutcomesBeginDate As Variant
Global gblOutcomesEndDate As Variant
Global gblOutcomesAdmitDate As Variant
Global gblOutcomesStaffID As Variant
Global gblOutcomesFromStaffID As Variant
Global gblOutcomesToStaffID As Variant
Global gblOutcomesExportFileName As Variant

Function ReturnOutcomesCaseNumber ()
    ReturnOutcomesCaseNumber = gblOutcomesCaseNumber
End Function

Function ReturnOutcomesDOB ()
    ReturnOutcomesDOB = gblOutcomesDOB
End Function

Function ReturnOutcomesProgramCode ()
    ReturnOutcomesProgramCode = gblOutcomesProgramCode
End Function

```

The screen shot above is from the module OutcomesCode. It contains all the global variables and functions used for outcomes functionality. Each global variable starts with the abbreviation "gbl" for global. Also, each global variable contains the phrase Outcomes to prevent it from being confused with any other global variables in CATT.

Global variables are used (for the most part) in order to pass the values of variables into queries. A "Return Function" was created for each global variable that, when called, returns the value of the global variable. Because Access does not allow the use of variables in queries, the function calls are used instead.

For simplicity, all the global variables were declared as variants. This is because some of the variables need to store the value of Null and an ordinary string or date variable would not function properly with a value of Null.